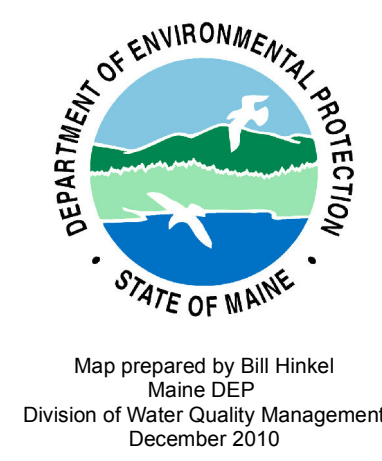


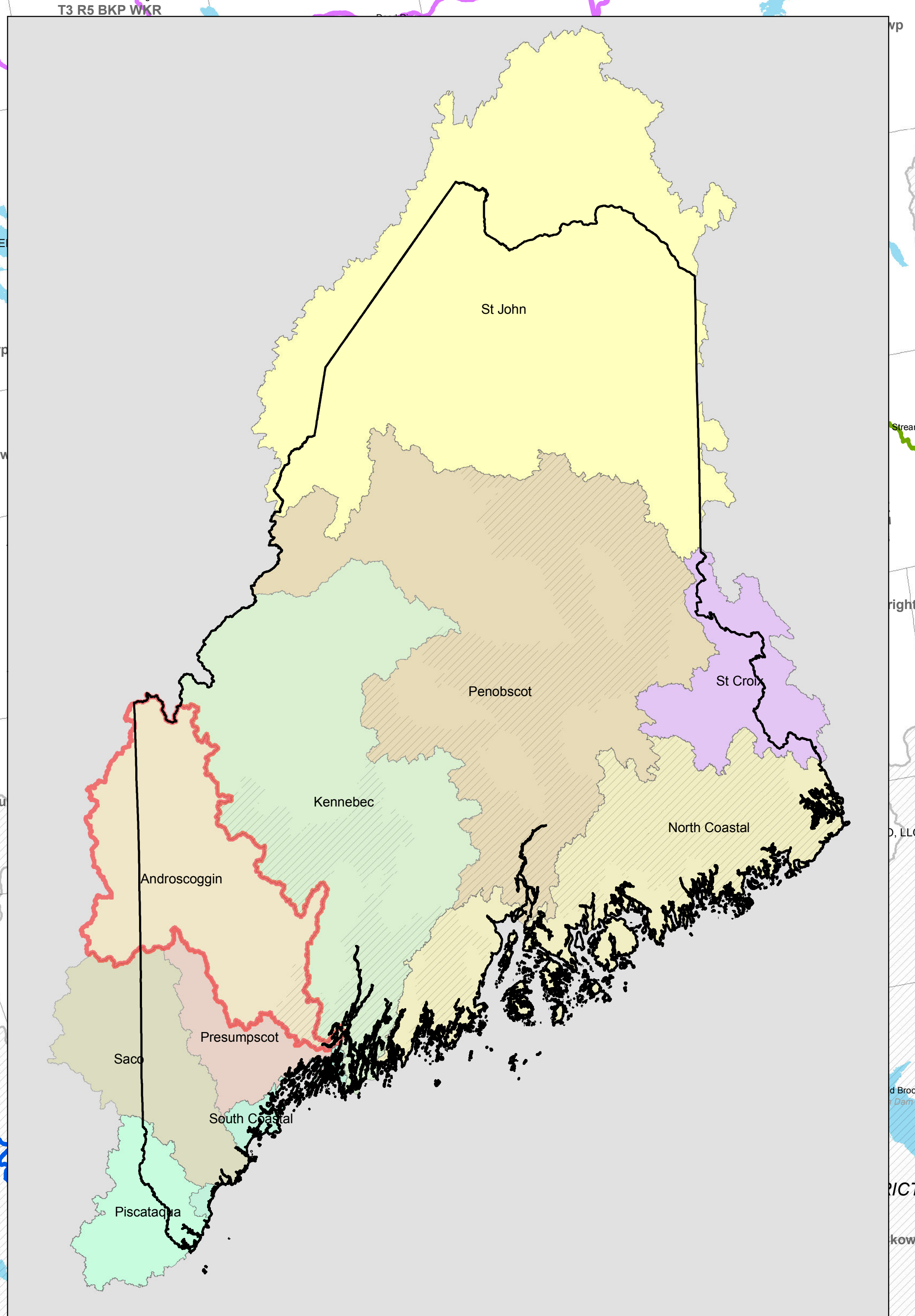
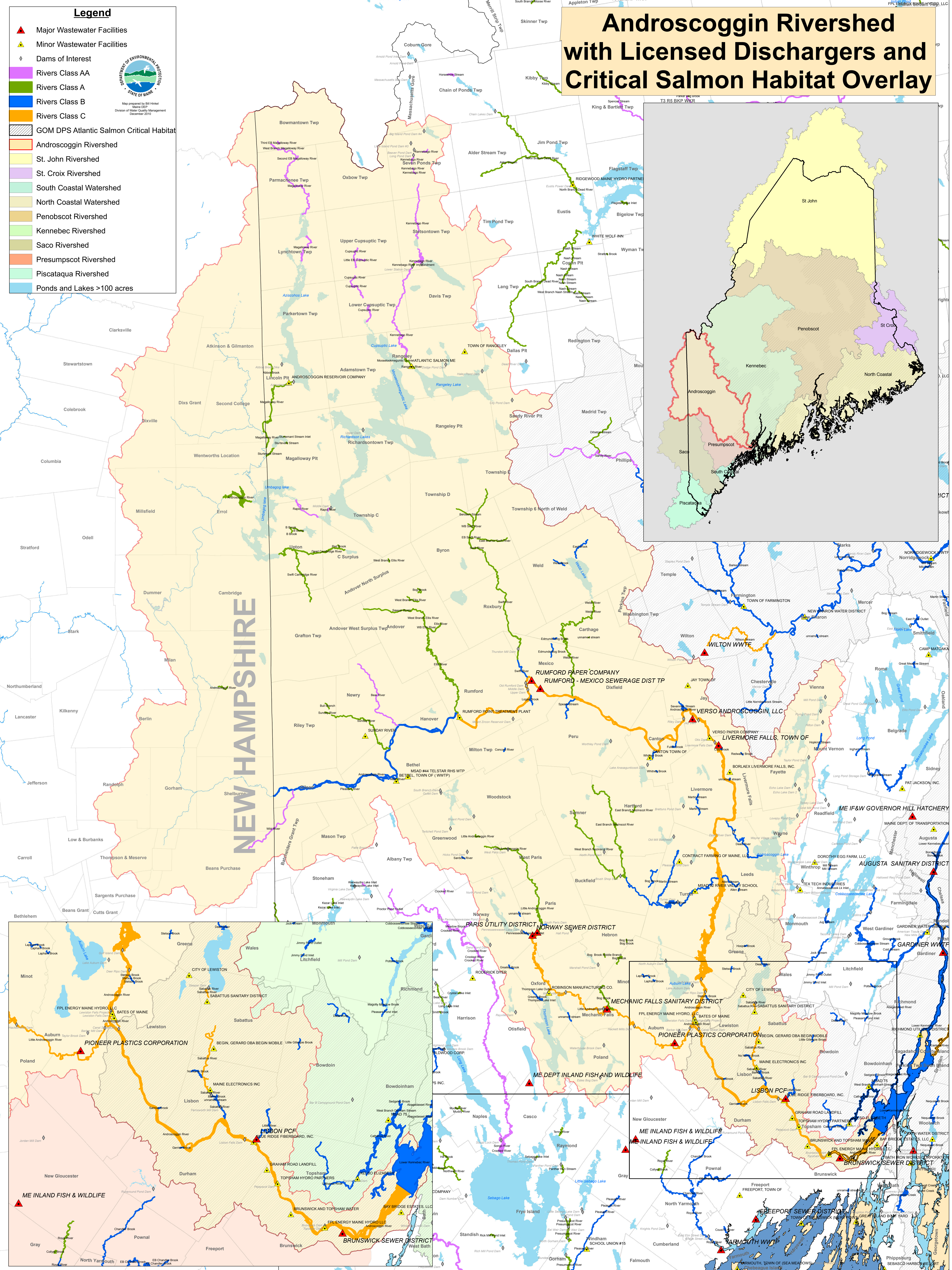
**Legend**

- ▲ Major Wastewater Facilities
- ▲ Minor Wastewater Facilities
- ◆ Dams of Interest
- Rivers Class AA
- Rivers Class A
- Rivers Class B
- Rivers Class C
- ▨ GOM DPS Atlantic Salmon Critical Habitat
- Androscoggin Rivershed
- St. John Rivershed
- St. Croix Rivershed
- South Coastal Watershed
- North Coastal Watershed
- Penobscot Rivershed
- Kennebec Rivershed
- Saco Rivershed
- Presumpscot Rivershed
- Piscataqua Rivershed
- Ponds and Lakes >100 acres



Map prepared by Bill Hinkel  
Maine DEP  
Division of Water Quality Management  
December 2016

# Androscoggin Rivershed with Licensed Dischargers and Critical Salmon Habitat Overlay



NEW HAMPSHIRE

